

Ultrasound, new user-interface

A brief guide to help orientate you to our new interface.

BROWSING

Whilst the core functionality of the products remains the same, all the browsing functionality has been moved to the left-hand toolbar.

Content is now organized by media type and illustrated with thumbnails to make finding what you need quicker and easier than ever.

Images, text, movies and animations can also be saved and shared from here.

IMAGE CONTROLS

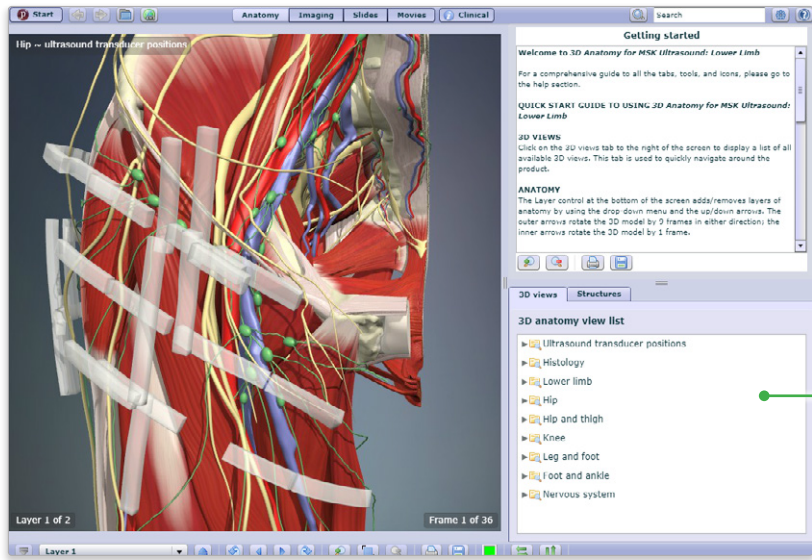
The way you interact with the 3D model is still very much the same. Select a structure to highlight the image and display corresponding text, and use the rotation, layer and zoom controls beneath the image to navigate.

The screenshot displays the 'ULTRASOUND: LOWER LIMB' interface. On the left, a vertical toolbar contains icons for 3D Views, Ultrasound transducer positions, Histology, Lower limb, Hip, Hip and thigh, Knee, Leg and foot, Foot and ankle, and Nervous system. The main area shows a 3D anatomical model of the hip and thigh region. The right-hand panel displays 'US 2 of iliopsoas and hip joint' with a 'Clinical link' for 'Hip joint effusion; Iliopsoas bursitis; Snapping iliopsoas tendon' and a 'Technique' section describing the patient position and transducer placement. Below the 3D model, there are navigation controls including a list of visible structures, zoom in/out arrows, a rotation control (a cube with a curved arrow), and a 'Visible structures' list.

On the right side of the interface, there are two green icons: a hand with arrows pointing left and right, and a mouse with a hand icon. A green line points from these icons to the rotation control in the interface.



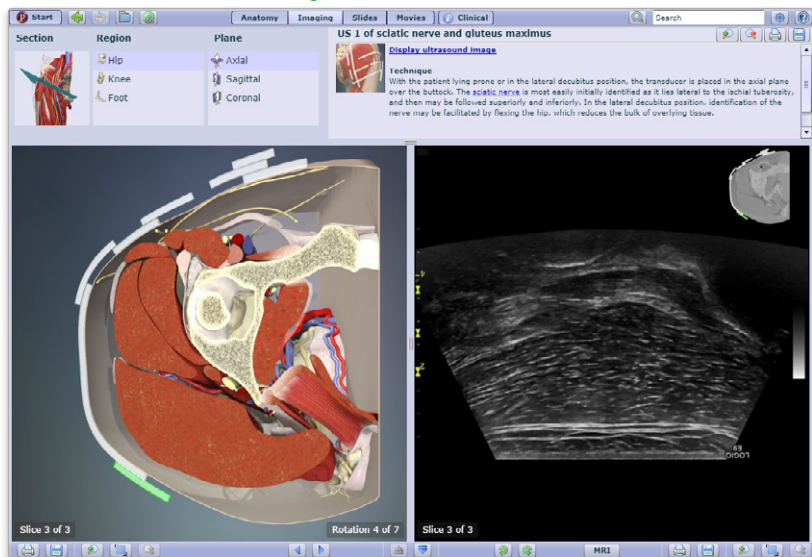
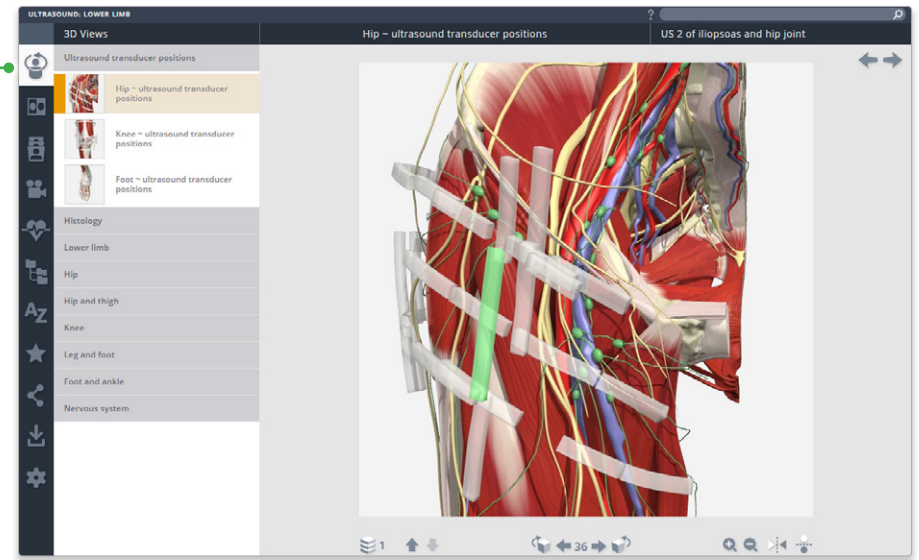
You can now also click and drag the model to rotate.



3D VIEWS

3D Views can be accessed using the top button of the left hand tool bar.

Thumbnails have been added to help you quickly browse the models.



IMAGING

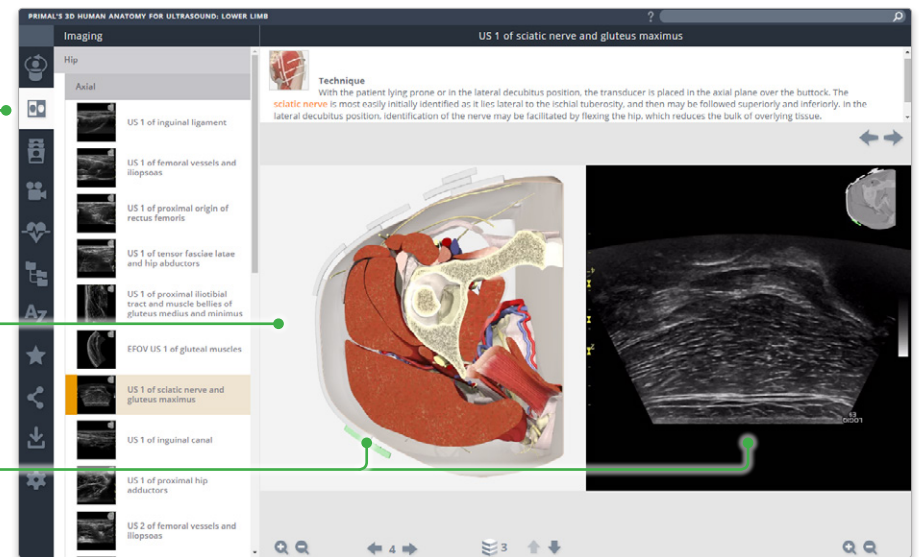
The second button provides access to the Imaging models.

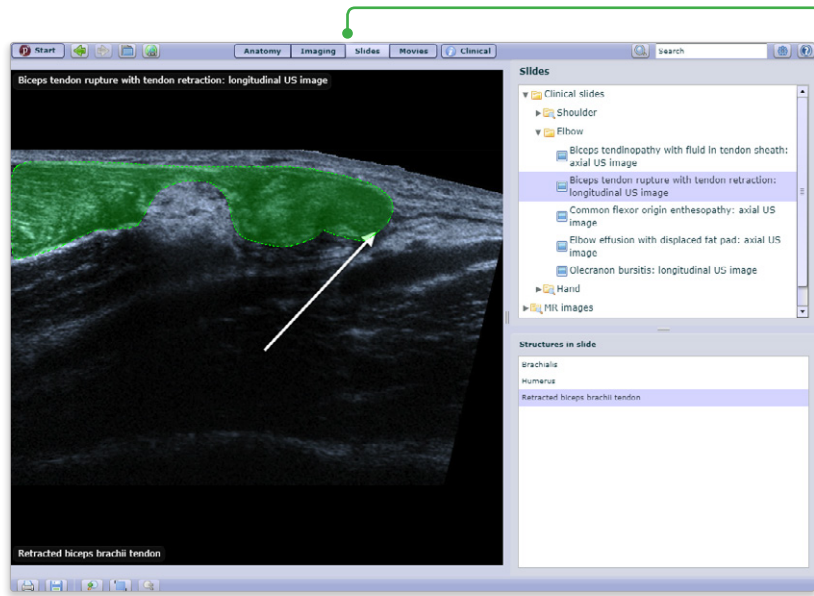
You can select the direction of the cross-sectional plane directly from the MRI panel.



You can now also click and drag the model to move through the slices.

Click on the transponder locations to see the equivalent MRI view.



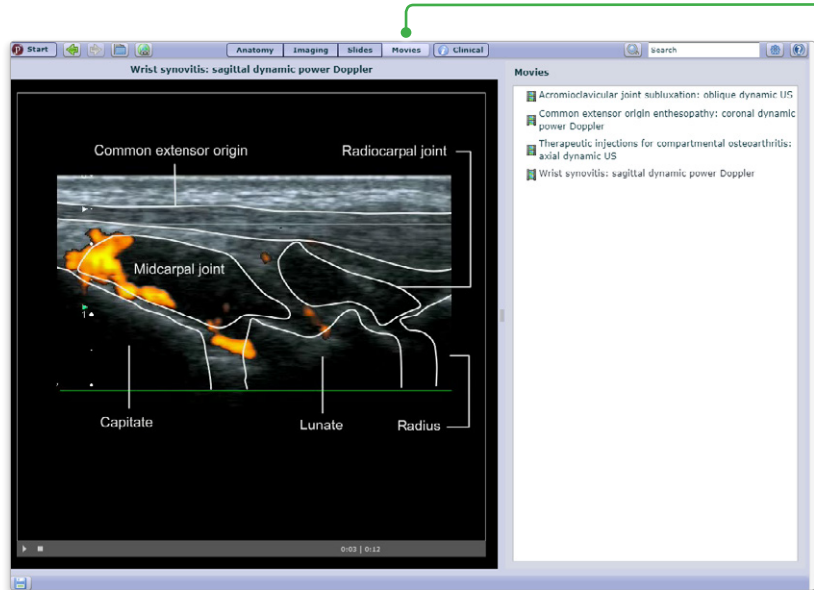
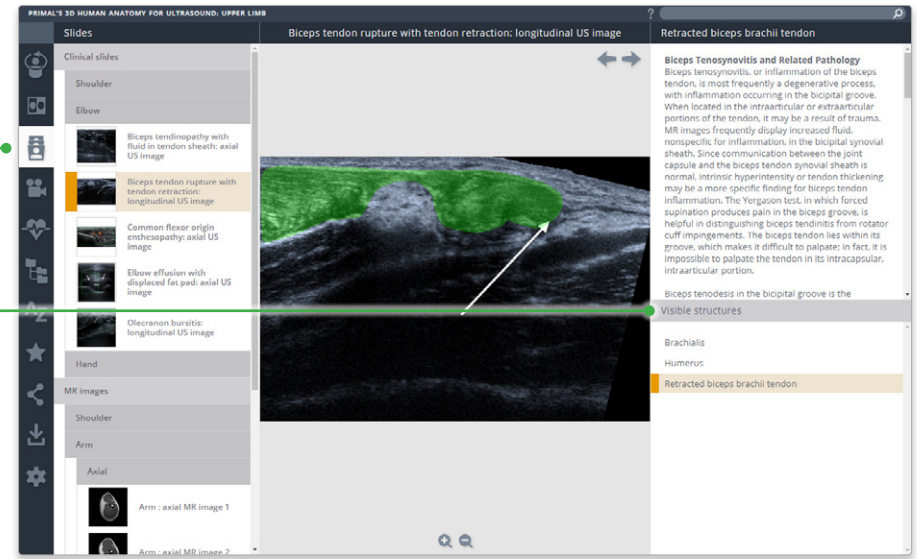


SLIDES

The next button opens the slides panel. Again use the thumbnails to quickly browse the images available.

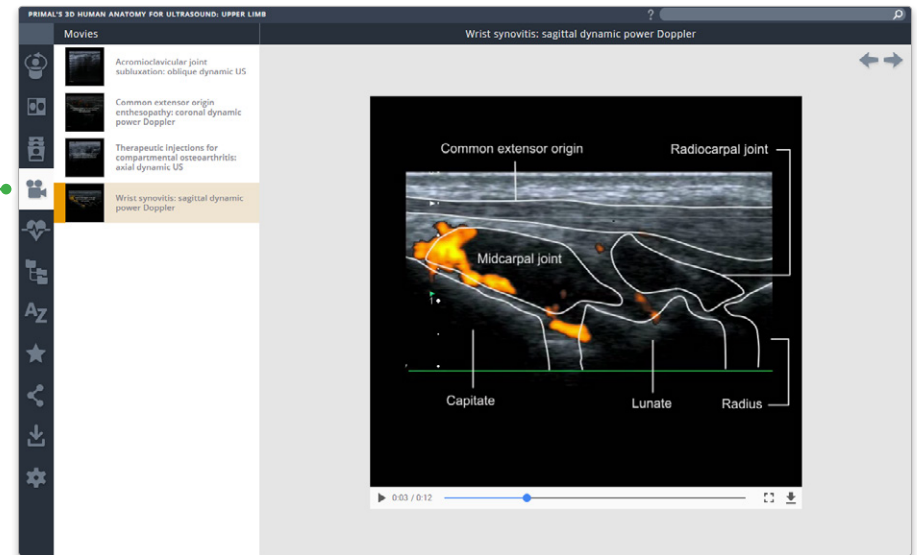
Select a structure in an interactive slide, such as the Anatomical Illustrations to display accompanying structure text.

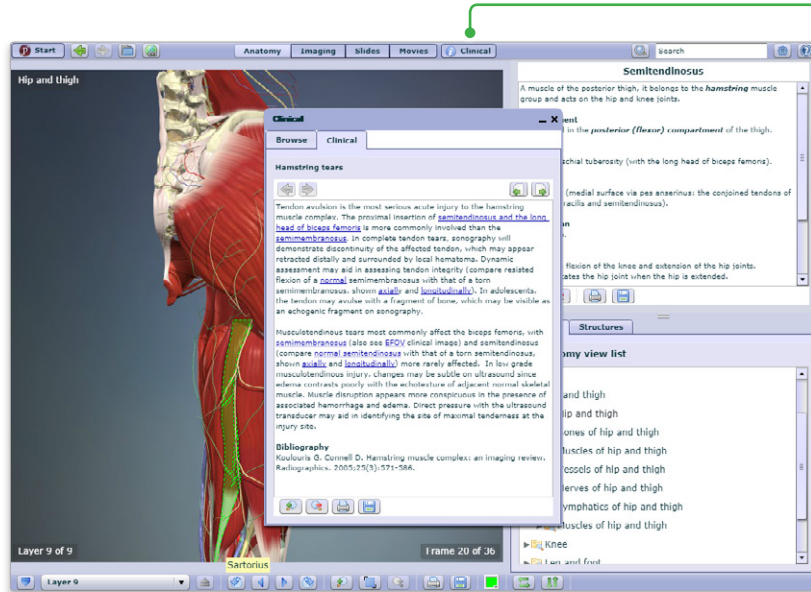
A list of highlightable structures can still be seen by opening the Visible structures window.



MOVIES

Movies can also be browsed visually and can now be played full screen.

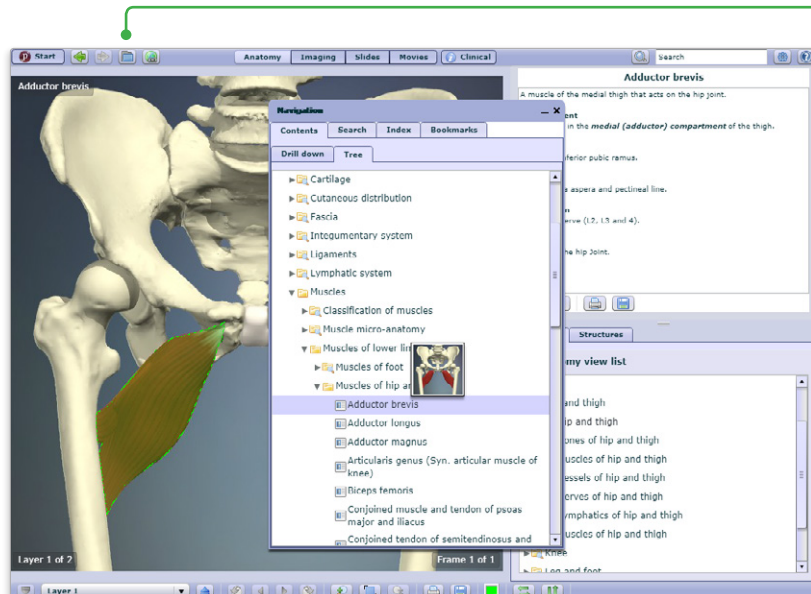
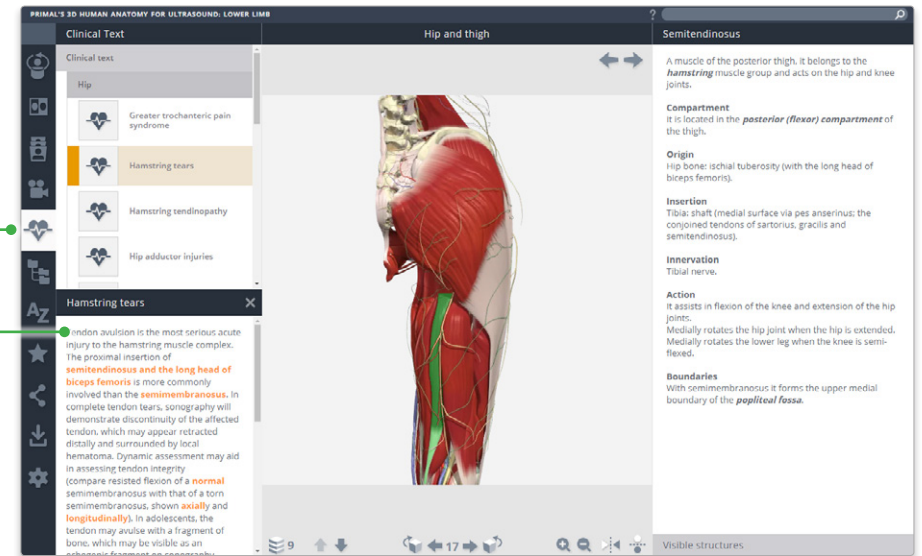




CLINICAL TEXT

The Clinical Text now appears in a panel below the Clinical contents folders. It remains open while you explore the contents of other tabs and can be closed at any time by clicking on the cross to the right of its title.

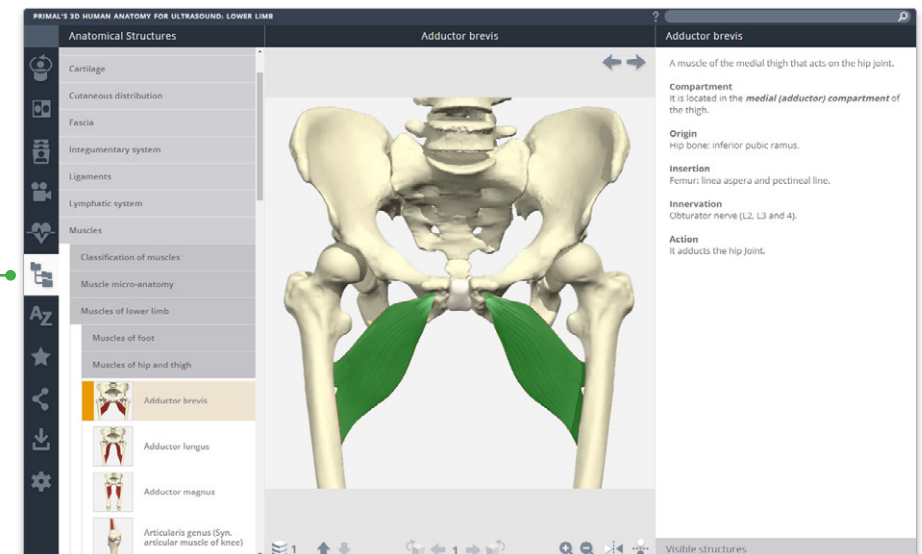
The text often contains links to related content, which will appear in the main view pane.

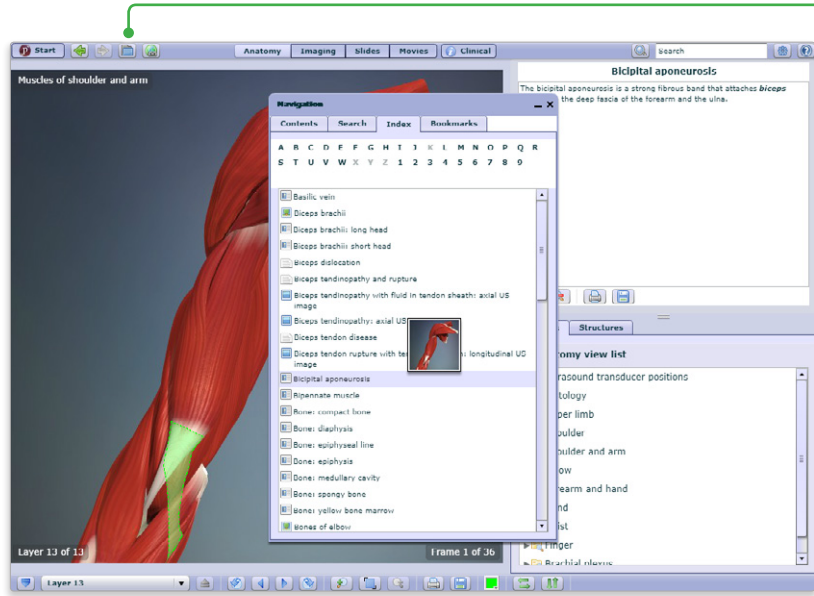


ANATOMICAL STRUCTURES

Use the Anatomical Structures panel to systemically browse the structures included in the product.

Also, leave the Contents panel open and select a structure in the image to discover its position in the hierarchy.

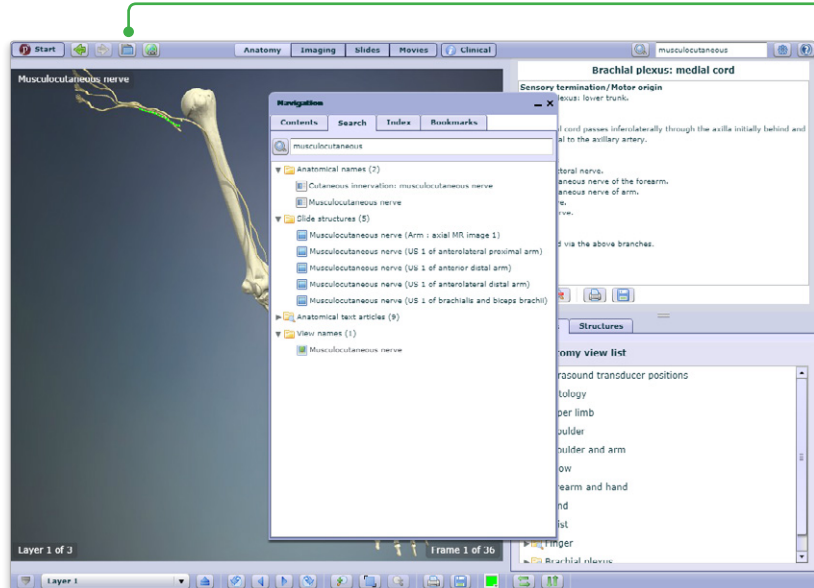
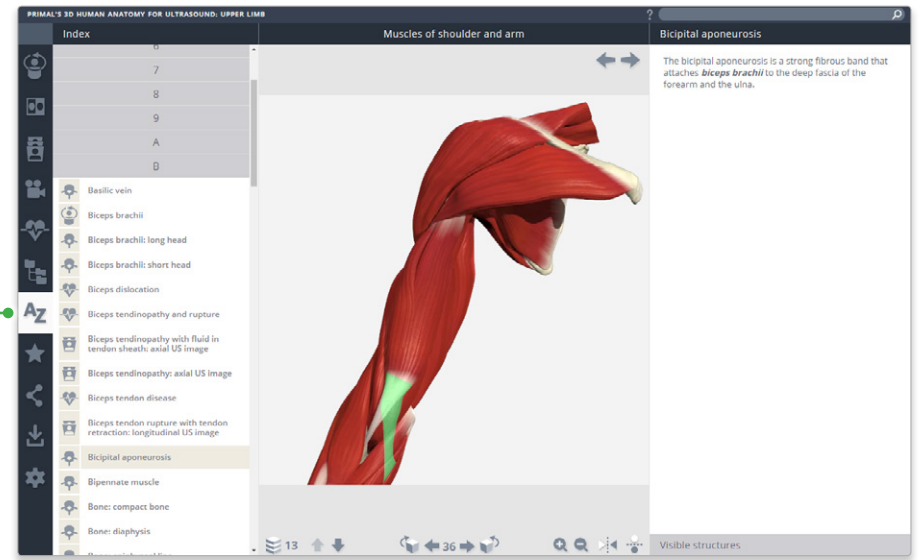




INDEX

Every structure, slide, movie and view is listed here alphabetically.

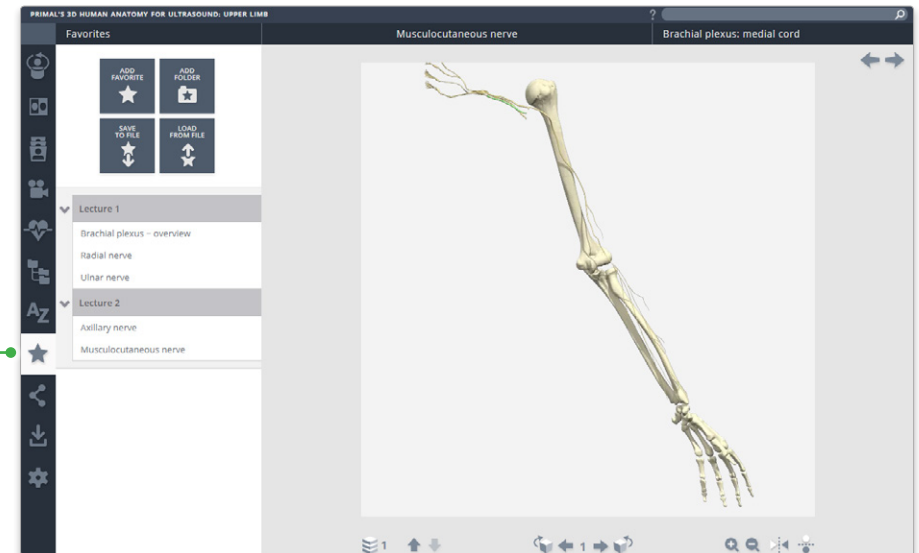
This allows for fast, efficient retrieval of content across all media types.

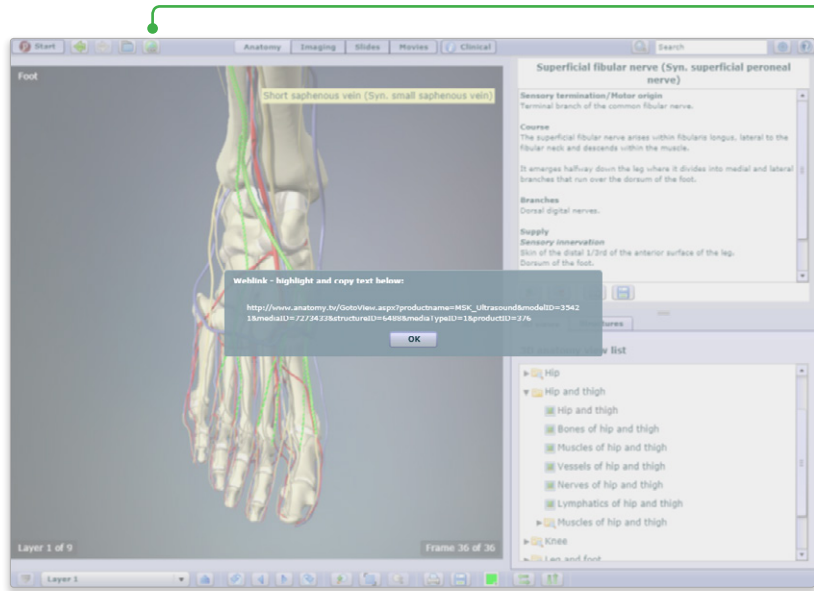


FAVORITES

Arrange your favorite images into folders, rename them and edit their order. Ideal for preparing presentations or lectures.

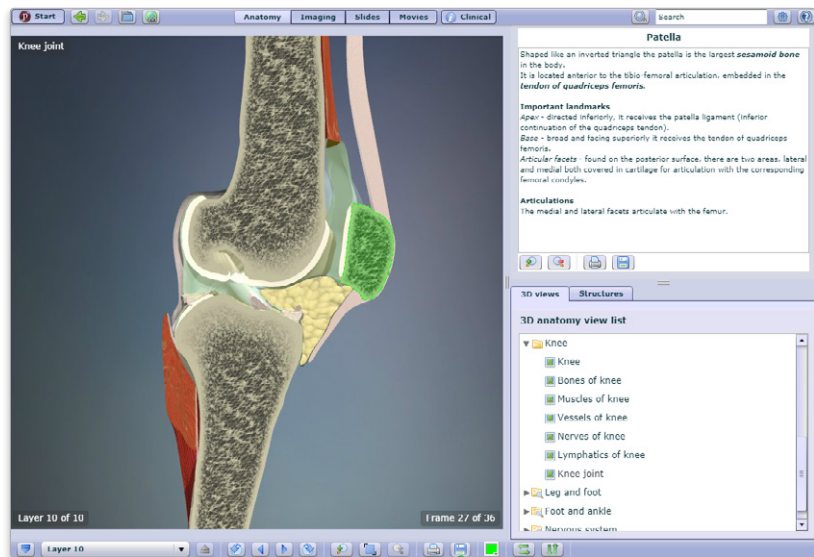
Export and import favorites to access from any PC or Android device.





SHARE

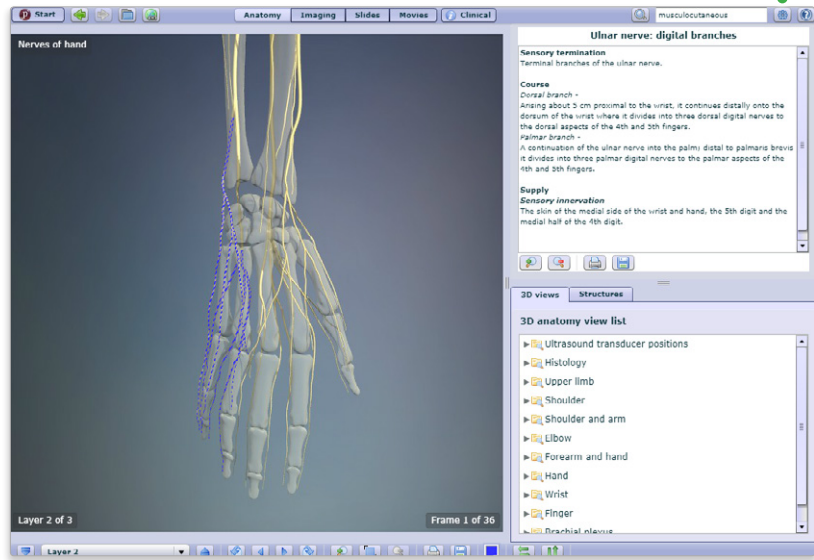
Direct other users to exactly the image you want them to see using our share function – use the copy link button on PC and Android devices, or select and copy the link on iPad.



DOWNLOAD

Save images, movies and text directly to your device from one place.



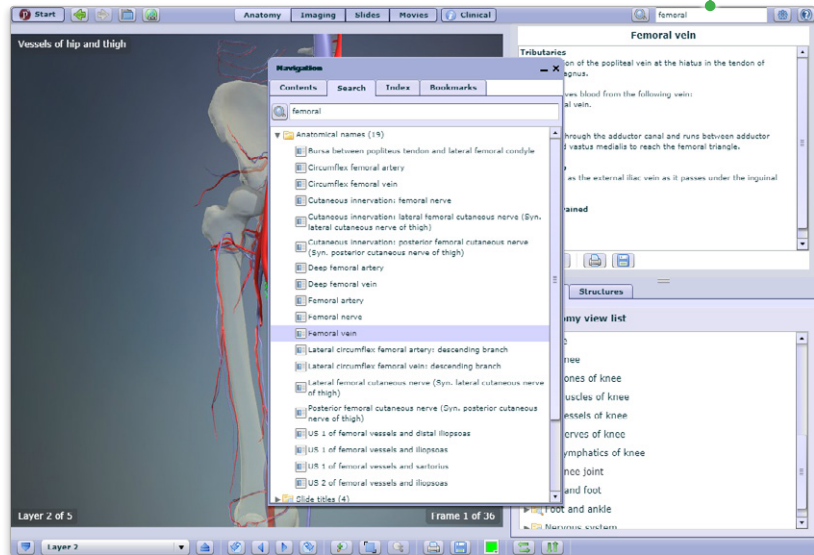
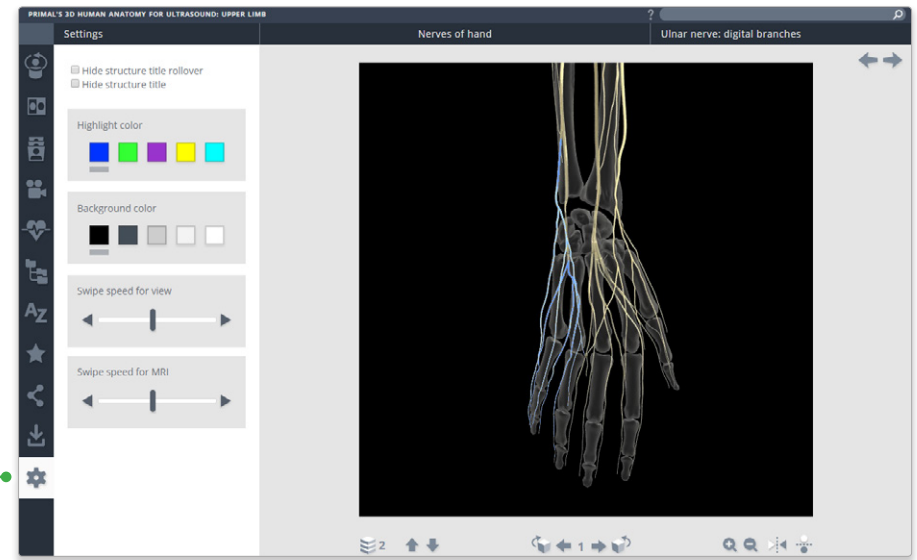


SETTINGS

Through the customizations in settings, you can now:

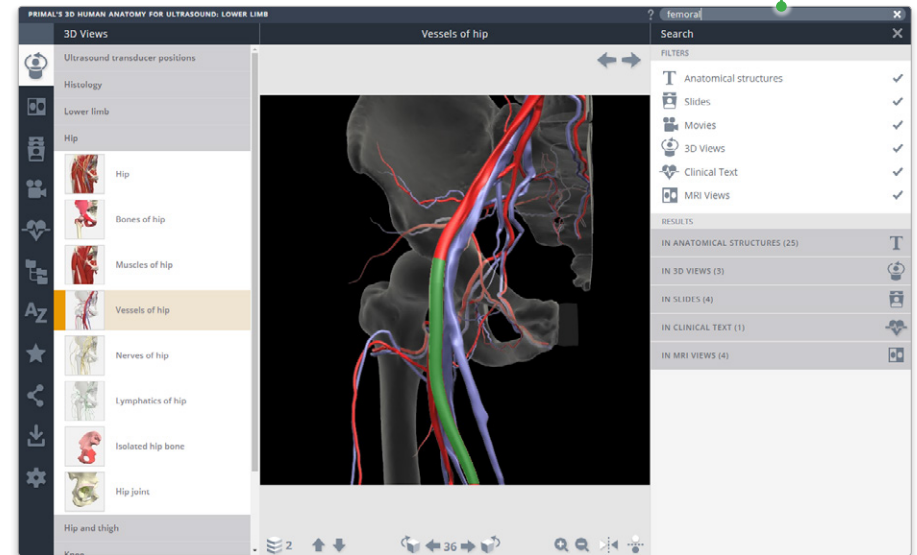
- hide the structure title and rollover labels for self quizzing or group testing;
- adjust colors of the highlight or background* to meet group or personal accessibility preferences;
- adjust the run-speed at which the views and animations rotate.

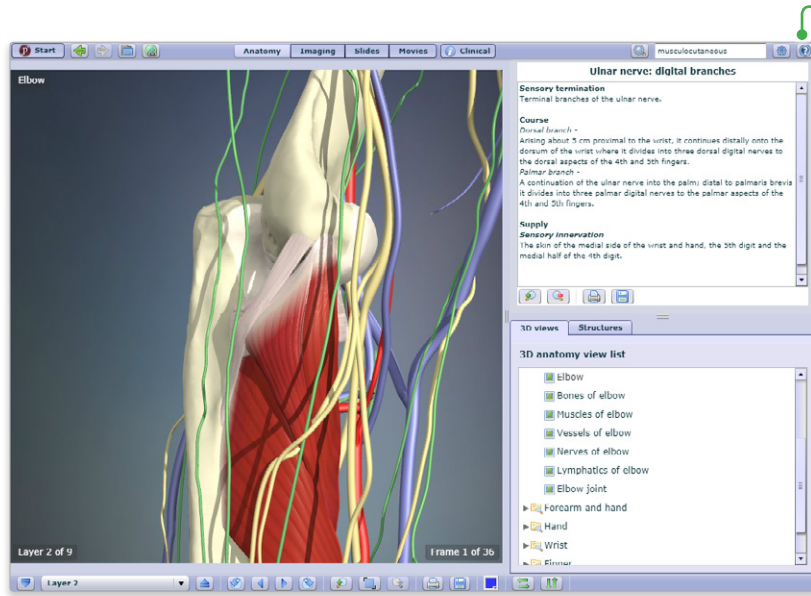
* Currently, background color can only be adjusted in Chrome on PC, Mac and Android.



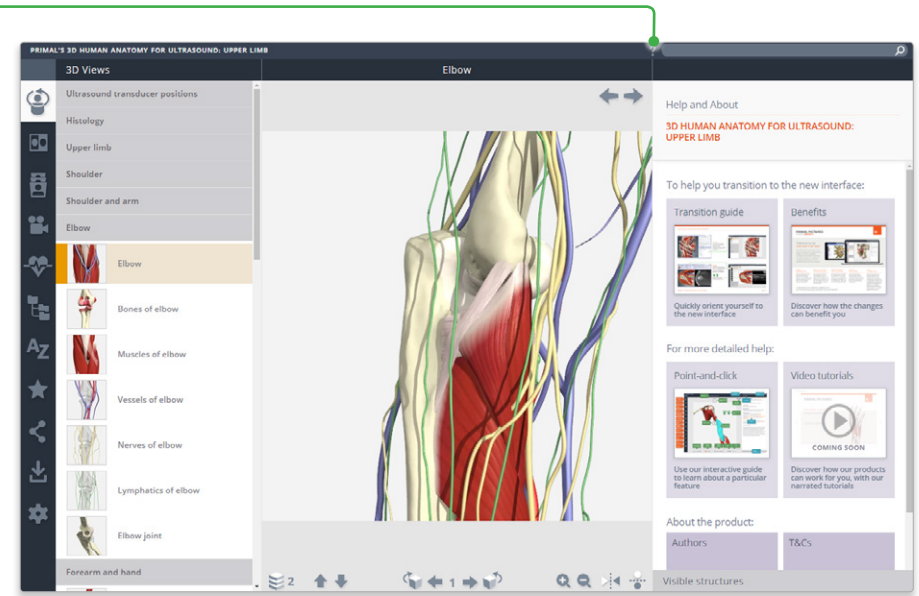
SEARCH

Use the search to find any content type. Use the filters to hone down your results.

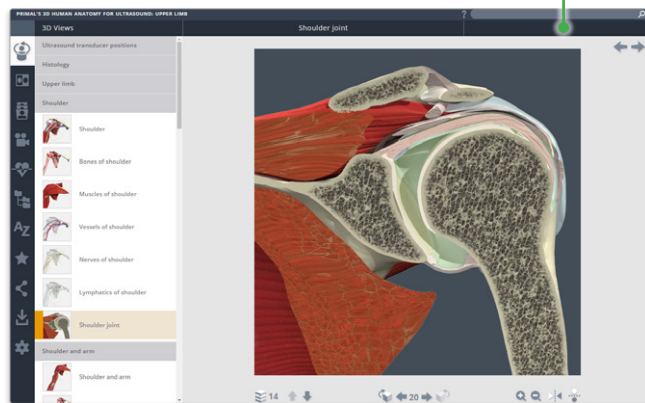




HELP
 For more information on how to use the product, please see the Help for an interactive point-and-click guide.
 Video tutorials will be added soon.



CLOSING THE RIGHT PANEL
 Click on the right title header



CLOSING THE LEFT PANEL
 Click on the active menu tab



CLOSING BOTH PANELS
 For even more focus, both panels can be closed

